

Brick Oven Bread and Sandwich Tokyo

Located high on the hill, Kujira offers stunning views and is highly popular with local families and couples. The dishes and desserts work with a delicious menu.

098-686-1733

Nakanessika Hoppo

The Hoppo is a traditional Okinawan dish made with pork, beef, and vegetables. It is a popular dish in Naha and is highly recommended by locals.

098-935-4528

YoYo An Factory

Serves authentic, Okinawan, and other delicious Japanese sweets in a casual atmosphere. They also recommend Okinawan traditional cakes and pastries. They are sure to be appreciated as souvenirs.

098-979-5661

Cottonowa + Jellyfish Bread

Located in a renovated traditional Okinawan house, this cafe serves a variety of breads, including jellyfish bread, and other delicious items.

33 471 40374

Gusuku Manju

Highly praised for its delicious, traditional Okinawan Manju. The owner, who is a local, is passionate about the craft and uses high-quality ingredients.

33 471 57464

Bakery Happiness

Has many local fans. Known for its delicious breads, including the famous "Bakery Happiness" bread. The owner, Mr. Tanaka, who put much effort into making the bread.

33 470 80877

Sweets & Confectionery Couple

Couple, the French owner for husband and wife is a cake shop. They also offer a variety of pastries and cakes. The shop is located in a beautiful building.

33 531 60922

Sweets Bakery

Savor sweets only found in Kitanaka. Including confectionery and breads that make great souvenirs!

098-932-1452

B2 Bn Smile

This place is best to have a good time drinking and having fun. They offer a variety of drinks and food. The atmosphere is very relaxed.

33 470 49282

Kame Soba Kitanaka Branch

This restaurant with many fans in the area is filled with locals and tourists. The soup is made from carefully selected ingredients: an exquisite blend of pork bone broth, soy sauce, and bonito. The crisp soba matches excellently with the thin, firm noodles.

098-933-3338

Rainbow Terrace OKINAWA

A cafe located on the second floor of Ayukai no Mori. Serves coffee made from fresh beans and other assortments of drinks. Enjoy a delicious lunch or dinner on the terrace looking out over the vast ocean.

098-933-1475

The Rose Garden

The Eggs Benedict has been popular since the restaurant opened. A freshly toasted English muffin topped with thickly sliced ham, poached eggs, and a smooth hollandaise sauce offers a mouthful of bliss with every bite.

098-932-2800

A&W Yagibaru Branch

A&W, known locally as "Ender", opened its first Japanese branch here in Yagibaru. It is worth visiting at least once if you want to immerse yourself in American culture in Okinawa. Also experience the retro drive-in!

098-933-1479

Erabu Cuisine Kana

Its specialty is a delightful erabu soup. Erabu refers to Chinese sea snake. It is believed to help nourish the body and promote health, and was a luxury food for the court in the Ryukyu Kingdom. Try authentic Okinawan cuisine at this restaurant.

098-930-3792

Ranranran

Yam chiffon cake, the most popular item, is baked to light and fluffy perfection. It comes in a variety of sizes, making it great for souvenir gifts. Also living the shelves are taro pie, white bread, and other simple and delicious baked goods.

080-6496-4035

Yakiniku Gosamaru

Serves Japanese Black Wagyu beef at reasonable prices. The meat is grilled over Japanese hardwood charcoal to preserve the flavor. We recommend the a la carte options, as well as the "Thickly Sliced Tongue Flavored with Salt", as well as the reasonable set menu.

098-932-5777

Waters/Charouka

On the first floor is the clothing and accessory boutique Waters. Looking through the carefully selected fabulous items is like going on an exciting treasure hunt. Up the stairs is the restaurant Charouka offering authentic Okinawan and Chinese tea and sweets. Spend a relaxing time in a space surrounded with exceptional tea utensils.

098-989-3501

Map of Okinawa Island

Map showing the location of Kitanakagusuku Village and surrounding areas. Key locations include Naha, Kitanakagusuku, and various islands.

From Kitanakagusuku Village to major spots

- Approx. 40 minute-drive to Naha Airport
- Approx. 35 minutes to Kokusai-dori
- Approx. 70 minutes to Churaumi Aquarium
- Approx. 15 minutes to American Village
- Approx. 30 minutes to Kaicho-doro (Umi-no-Eki)

Restaurant Kujira Kitanakagusuku

Located high on the hill, Kujira offers stunning views and is highly popular with local families and couples. The dishes and desserts work with a delicious menu.

098-686-1733

Japanese Style Hing Karashima

The interior with Japanese elements throughout the restaurant is calming and stylish, and you can still enjoy an unforgettable dining experience. The set menus prepared by the skilled owner are all exceptional.

098-935-4528

Japanese Restaurant Rakui/Wyibayashi Shoten

A restaurant frequented by locals for the taste of home's Okinawan home cooking. The hearty lunch, such as Okinawan home-style dishes and collard greens, is a must for those who love Okinawan food.

098-933-4668

Original Fast Food

Chirashi, a hearty Okinawan dish, is a new kind of fast food. It is a combination of traditional Okinawan dishes and modern fast food concepts.

098-935-4528

Azama Coffee

Opening hour: The owner grows coffee in the future. The coffee is made from high-quality beans and is served in a casual atmosphere.

098-935-4528

European Curry Cafe Franklyn

Ground in Kitanakagusuku Village with great views overlooking the ocean. The cafe serves a variety of European curries and other dishes.

098-911-3524

Marph Kitchen

Transformed from a local sake to a kitchen-and-meatery. The cafe serves a variety of dishes, including traditional Okinawan food.

098-694-2288

Kunumisha

Try the original space early while enjoying the view of the lovely Kitanakagusuku Village. The cafe serves a variety of dishes, including traditional Okinawan food.

098-935-4500

Yutakeya Soba

This restaurant is in a traditional Japanese-style building. It serves a variety of soba dishes, including traditional Okinawan soba.

098-935-4188

Self-Roasted Coffee Shop Manemamaru

With "Self-Roasted" the name, the coffee shop is a popular destination for coffee lovers. The shop serves a variety of self-roasted coffee beans.

098-935-4500

Night Gourmet

At night, relish delicious drinks and foods in Kitanakagusuku. The cafe serves a variety of drinks and food, including traditional Okinawan food.

098-932-1452

Sweets Bakery

Savor sweets only found in Kitanaka. Including confectionery and breads that make great souvenirs!

098-932-1452

Instagram

Follow us on Instagram for the latest updates and photos from Kitanakagusuku Village.

Facebook

Follow us on Facebook for the latest updates and photos from Kitanakagusuku Village.

Twitter

Follow us on Twitter for the latest updates and photos from Kitanakagusuku Village.

YouTube

Follow us on YouTube for the latest updates and photos from Kitanakagusuku Village.

Fish Shop Tsuna

Serves "The Boat", a Hawaiian dish of fish topped with fresh marinated in original sauce. The shop is a family-run business and is highly recommended by locals.

098-686-1733

Suijyuwa's Noodle Shop Saitaru

The Okinawan noodle shop is located near the Kitanakagusuku Village. The shop serves a variety of Okinawan noodles and other dishes.

098-935-4528

Diner Kitanajima

The Okinawan noodle shop is located near the Kitanakagusuku Village. The shop serves a variety of Okinawan noodles and other dishes.

098-933-4668

Original Fast Food

Chirashi, a hearty Okinawan dish, is a new kind of fast food. It is a combination of traditional Okinawan dishes and modern fast food concepts.

098-935-4528

Azama Coffee

Opening hour: The owner grows coffee in the future. The coffee is made from high-quality beans and is served in a casual atmosphere.

098-935-4528

European Curry Cafe Franklyn

Ground in Kitanakagusuku Village with great views overlooking the ocean. The cafe serves a variety of European curries and other dishes.

098-911-3524

Marph Kitchen

Transformed from a local sake to a kitchen-and-meatery. The cafe serves a variety of dishes, including traditional Okinawan food.

098-694-2288

Kunumisha

Try the original space early while enjoying the view of the lovely Kitanakagusuku Village. The cafe serves a variety of dishes, including traditional Okinawan food.

098-935-4500

Yutakeya Soba

This restaurant is in a traditional Japanese-style building. It serves a variety of soba dishes, including traditional Okinawan soba.

098-935-4188

Self-Roasted Coffee Shop Manemamaru

With "Self-Roasted" the name, the coffee shop is a popular destination for coffee lovers. The shop serves a variety of self-roasted coffee beans.

098-935-4500

Night Gourmet

At night, relish delicious drinks and foods in Kitanakagusuku. The cafe serves a variety of drinks and food, including traditional Okinawan food.

098-932-1452

Sweets Bakery

Savor sweets only found in Kitanaka. Including confectionery and breads that make great souvenirs!

098-932-1452

Map of Okinawa Island

Map showing the location of Kitanakagusuku Village and surrounding areas. Key locations include Naha, Kitanakagusuku, and various islands.

From Kitanakagusuku Village to major spots

- Approx. 40 minute-drive to Naha Airport
- Approx. 35 minutes to Kokusai-dori
- Approx. 70 minutes to Churaumi Aquarium
- Approx. 15 minutes to American Village
- Approx. 30 minutes to Kaicho-doro (Umi-no-Eki)

Mexican Dinner MARISSOL

The Mexican restaurant MARISSOL is a casual dining establishment. It serves a variety of Mexican dishes, including traditional Mexican food.

098-935-4528

Vegetarian Cuisine

Under the motto, "Eat body-friendly and baby food", meals are prepared with mainly healthy grains and vegetables. The shop serves a variety of vegetarian dishes.

098-935-4528

Asian Food Futton

Having the motto, "We want our customers to be able to eat with peace of mind", the restaurant serves carefully selected dishes. The shop serves a variety of Asian dishes.

098-935-4528

Curry House Laxmi

This Indian Curry restaurant is a casual dining establishment. It serves a variety of Indian curries and other dishes.

098-935-4528

Goat Cuisine Nanzan

The goat, a "body-friendly" dish, is a popular item. The shop serves a variety of goat dishes, including traditional goat meat.

098-935-4528

Cafe-Jam + Kuka..

Reopened after a long time, the cafe serves a variety of dishes, including traditional Okinawan food. The shop serves a variety of dishes.

098-930-7372

Fifth Son

Serve sandwiches made with freshly baked homemade bread. The shop serves a variety of sandwiches and other dishes.

098-930-7372

King Tacos Kitanaka Branch

The famous taco shop that has been in business for about 30 years. The shop serves a variety of tacos and other dishes.

098-930-7372

Pub Lounge Emerald

Experience a variety of local and international music. The pub serves a variety of drinks and food.

098-932-4263

Ryu-Kyo Sweets Sans Souci

Serves a delightful fusion of Okinawa (Ryukyu) and Kyoto cuisines, using Okinawan ingredients and Kyoto's stock, green onions, shichimi spice, matcha, and other ingredients. The manager, who trained at a Kappo restaurant in Kyoto, makes detectable items that are a must-try.

098-935-1012

A Danian Cafe

The simple, thick soup made with 12 spices brings out the delicious flavor of a generous serve of vegetables, and can be enjoyed as a soup. The chow mein is also highly recommended.

098-935-0188

Ploughman's Lunch Bakery

Serves delicious breakfast and homemade bread. The "A.M. Plate" is limited to 10 servings daily. Safe and pesticide-free ingredients mainly from Okinawa prefecture are carefully selected based on the local production for local consumption model. Opens conveniently for 8:00 a.m.

098-976-9097

Kozy's Pizza

Varies several types of pizzas regularly as well as seasonal items. The authentic American pizzas attract many repeat international customers. Choose from S, M, L, and XL sizes. A kids' room is available.

098-923-0993

Kuwatshil Shokudo Aozora Kitanakagusuku Branch

We recommend the "Yamabiki Chicken Nanban 600 Yen," which has been covered many times by the media. The juicy chicken, crispy fried batter, and light homemade sauce are irresistible.

098-989-0811

Mother Coffee

Dutch baby pancakes are baked in the oven. Choose from savory or sweet options according to your preference. As it is a popular item, many customers are said to eat breakfast here.

098-923-3723

Okinawa Story

This restaurant is an American-style house on a hill. Casual French lunch meals starting at 1,100 yen are popular. The facility's menu range from a drink up to coffee to hosting a private party. Also check out the attached art store!

080-3951-3449

Map of Okinawa Island

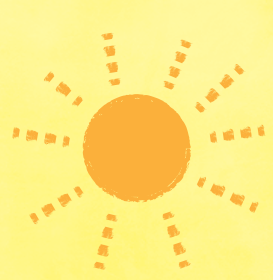
Map showing the location of Kitanakagusuku Village and surrounding areas. Key locations include Naha, Kitanakagusuku, and various islands.

From Kitanakagusuku Village to major spots

- Approx. 40 minute-drive to Naha Airport
- Approx. 35 minutes to Kokusai-dori
- Approx. 70 minutes to Churaumi Aquarium
- Approx. 15 minutes to American Village
- Approx. 30 minutes to Kaicho-doro (Umi-no-Eki)

SHOPPING EXPERIENCE

キタナガス 7 map



N
4

50 Art Shop Yoh

Occupies a corner of the restaurant Okinawa Monogatari, located on a hill in Zukeran. A couple who run a gallery in Shizuoka for 30 years exhibits and sells works by unique artists from and outside Okinawa.



☎090-4799-2873
Bell Air #12, 567 Zukeran, Kitanakagusuku-son
Inside Restaurant Okinawa Monogatari
Hours: 12:00p.m.-5:00p.m.
Closed: Irregular holidays; Parking available

MAPCODE 33 498 569*36



51 Kimonobana (Kimono Fleur)

Under the concept of "My heart-fluttering kimono," this shop sells carefully selected kimonos, mainly vivid antique and vintage ones. Kimono rental and dressing services are also offered.



☎050-1374-1087
1380-2 Kishaba, Kitanakagusuku-son
Hours: 10:00a.m.-6:00p.m.
Closed: Sun. <https://www.kimonobana.com>

MAPCODE 33 503 317*76



52 Nakamura Yoso

To ensure that clothes age with the wearer, the owner, Mr. Nakamura, responsibly selects materials and tailors them carefully for long-term use. The wide-ranging lineup includes formal to casual wear.



☎098-930-2277
1500-2 Churabana, Kitanakagusuku-son
Hours: 10:00a.m.-8:00p.m.
(Sun. until 6:00p.m.)
Closed: Wed.; Parking available

MAPCODE 33 531 546*30



53 HSTI Skeletal Adjustment Center Tsuki no Niwa

Established in Okinawa, the HSTI skeletal adjustment method refers to bone tuning. Unlike conventional chiropractic practices, it involves no rubbing or pressing of painful areas. The distortion of the bones is gradually and patiently restored to their original alignment.



☎098-989-9456
1412 Shimabuku, Kitanakagusuku-son
By reservation only
Closed: Tue.; Parking available

MAPCODE 33 531 650*55



54 e cru

Sells one-of-a-kind clothes, bags, accessories, and more made by artists in Okinawa. The owner-recommended laundry detergent, which is said to be 99% biodegradable, is a popular hidden item.



☎098-935-3152
1380-2 Kishaba, Kitanakagusuku-son
Hours: 12:00p.m.-5:30p.m.
Closed: Sun., Mon., Tue.; Parking available

MAPCODE 33 503 266*58



55 Sofa Community

Sells vegetables and processed foods grown naturally without pesticides, fertilizers, or chemicals. Get a colorful drink to go at the parlor. Soups, open twice a week, which is sure to bring a smile to your face.



☎098-989-8880
277 Asa, Kitanakagusuku-son
Hours: 10:00a.m.-5:00p.m.
(Parlor: Mon.-Fri. hours 10:00a.m.-3:00p.m.)
Open daily; Parking available

MAPCODE 33 471 087*35



56 Coral Rock

This is the oldest climbing gym in Okinawa. The owner, with about 30 years of climbing experience, teaches sport climbing carefully even to beginners. Shoes, harness, etc. are available for rent.



☎098-935-5777
369-2 Chunjun, Kitanakagusuku-son
Hours: 2:00p.m.-10:00p.m. (Sat. 1:00p.m.-8:00p.m.) Sun., national holidays 10:00a.m.-7:00p.m. *Last entry 1 hour before closing
Closed: Sat., 2nd Tue. of the month; Parking available

MAPCODE 33 471 647*87



57 Growth

Many T-shirt shops are found in Okinawa, but Growth is by far the best place to find unique and stylish T-shirts. It offers a wide selection of T-shirts made by the store's designers at reasonable prices. Orders are also accepted from outside Okinawa.



☎098-923-3555
1500-2 Adaniya, Kitanakagusuku-son
Hours: 9:00a.m.-7:00p.m. (Sat. until 3:00p.m.)
Closed: Sat., Sun., national holidays; Parking available

MAPCODE 33 470 484*26



58 Glass Studio Buntaroh

Makes recycled glass by reusing empty bottles of awamori and other products as raw materials. Numerous vases and small articles are on display inside. Custom orders are accepted.



1022 Adaniya, Kitanakagusuku-son
Check @glassstudio_buntaroh
Closed: Irregular holidays; Parking available

MAPCODE 33 440 744*64



59 Tomihachi

Specializes in custom-made sportswear. Particularly popular among its many items are Ryukyu ethnic costume and Eisa dance costume pattern T-shirts, made from sag-resistant, quick-drying sports fabric.



☎098-989-0466
101-1461-1 Kishaba, Kitanakagusuku-son
Hours: 11:00a.m.-6:00p.m.
Closed: Sun.; Parking available

MAPCODE 33 469 199*81



60 Komesusansinten

Makes and sells original sanshin instruments that can be played for a long time. Examples include sanshin that are easy to tune using adapted guitar pegs, and sanshin with Ryukyu glass-adorned tuning pegs.



☎098-923-4134
145 Adaniya, Kitanakagusuku-son
Hours: 9:00a.m.-6:00p.m. (Sat. until 12:00p.m.)
Closed: Sun.; Parking available

MAPCODE 33 469 168*84



Shopping!

AEON MALL Okinawa Rycom

Even on a sudden rainy day, you can enjoy a fun-filled day shopping for souvenirs and beach items as well as eating great food! Spend a day at one of the largest malls in Okinawa offering weekend events and cuisine from around the world.



MAPCODE 33 530 317*20

☎098-930-0425 (AEON MALL Okinawa Rycom switchboard)
☎098-983-8888 (AEON STYLE)
1 Rycom, Kitanakagusuku-son
Hours: 10:00a.m.-10:00p.m. (AEON MALL Specialty Store)
*Varies by store
8:00a.m.-11:00p.m. (AEON STYLE 2F)
9:00a.m.-11:00p.m. (AEON STYLE 3F-4F)
Open daily; Parking available

The large tank in the atrium with about 1,000 fish swimming is well worth seeing!

Hours may be subject to change due to COVID-19 impacts.

Items available through Kitanakagusuku Village's Hometown Tax Program (Furusato Nozei)



*Okinawan biscuits (chinsuko) infused with asa seaweed, a local specialty, are only available in Kitanakagusuku Village. (Chinsuko (large) 2028 packets, YK Nakamaseika Honpo)



*Convenient freeze-dried soup and ochazuke (rice over green tea) packages containing a generous amount of Kitanakagusuku Village's asa seaweed. It will fill your mouth with the aroma of the seashore. (Ryukyu Asa Seaweed Soup and Asa Seaweed Ochazuke, Sashinakagusuku Fisheries Cooperative, Kitanakagusuku Branch)



This T-shirt is an adaptation of the Okinawan Eisa dance costume. Watch, dance, and enjoy traditional authentic Okinawa Eisa! Wearing this T-shirt will surely make you want to dance! (Children's T-shirt [Eisa Heppa Pattern], Tomihachi)



Pottery is called "yachimun" in Okinawa. The tableware, plates, and miscellaneous ceramics noted in Okinawan life, with thick shapes and distinctive illustrations, have long been used by the people in their daily life. This mug cup features a pale turquoise color. (Deformed Mug Cup in Turquoise Blue, Jin Toki Koto)



*Sauce and ketchup made with safe and reliable tomatoes grown by EM farming. You will enjoy the intense sweetness of the tomatoes. (Tomato Sauce and Ketchup, Kitanakaso Bento)



Furusato Choice



Furusato Choice

HEAVENS!

Liko's is the Hawaiian word for passion fruit. Each jar generously contains three passion fruits. Additive-free and safe. It makes a great accompaniment to breads and cakes.



*Please see the website.
<https://heavens.stores.jp/>



Sold on the website and at Azama Coffee.

Churabana Tea

Kanigawa Tea won the Triple Crown at the 2019 Japanese Black Tea Grand Prix in the Challenge Division. Taste its exquisite black tea, made painstakingly by taking advantage of the subtropical climate, soil, and natural features unique to Okinawa!



*Please see the website.
<http://churabana.com/>



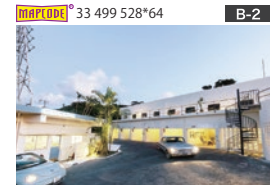
Available at stores such as T Galleria Okinawa by DFS, Naha Airport, and Washita Shop.

51 Spice Motel Okinawa

This 1970s retro American-style motel was produced by a renovation company. The unique space makes you feel like you've been transported into the world of movies. Hot coffee is free for guests.



☎098-923-1066
1000 Kishaba, Kitanakagusuku-son
Hours: 8:00a.m.-11:00p.m.
3:00p.m.-10:00p.m. (Inquiries)
Open daily; Parking available



56 Rycom Garden Resort

The hotel, equipped with Wi-Fi and parking, is only a 10-minute drive to Chutan, Okinawa, and Ginowan and offers easy access to various places. Breakfast, which includes bread, soup, coffee, etc., is free!



☎098-933-3948
786 Rycom, Kitanakagusuku-son
Hours: 7:00a.m.-10:00p.m. (Inquiries)
Open daily; Parking available

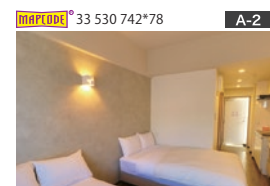


53 Mr.KINJO in Rycom Kitanakagusuku

On top of being reasonable, all 21 rooms come with a washing machine, microwave, refrigerator, and other amenities to make your stay comfortable. Also conveniently located for sightseeing. Treat yourself to an effortless, mini experience of life in Okinawa.



☎098-923-1172
400 Shimabuku, Kitanakagusuku-son
Front desk: 3:00p.m.-8:00p.m.
Open daily; Parking available



54 EM Wellness Kurashinohakko Lifestyle Resort

This hotel has a reputation for its pesticide-free vegetables grown on its farm. Located on high ground, the exceptional view it commands needs no mention. Eating lunch taking in this scenery soothes the body. It has fans of all ages.



☎098-935-1500
1478 Kishaba, Kitanakagusuku-son
Hours: 7:00a.m.-11:00a.m. (Inquiries)
(LO 2:30p.m.)
Open daily; Parking available



55 Ucchee's Cafe

The "Pasta Set" and other foods served in an American diner-inspired space satisfy the palate of even international visitors. The hospitality provided by manager dog Kenta and cat staff Sashimi is sure help you relax.



☎098-989-9944
1911 Toguchi, Kitanakagusuku-son
Hours: 11:00a.m.-6:00p.m.
Closed: Wed.; Parking available
*Accommodation available

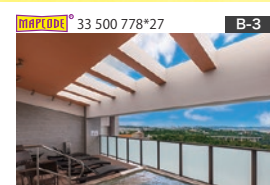


56 Yenn's Marina inn. RYCOM

Located on high ground overlooking Nakagusuku Bay, all rooms of this condominium hotel have an ocean view. The top floor has an open-air bath also with a view. The rooms come with a kitchen, washing machine, and dryer. Stay as if you were living there.



☎0120-92-8861
547 Rycom, Kitanakagusuku-son
<https://hpc.jp/gayemrycom/>

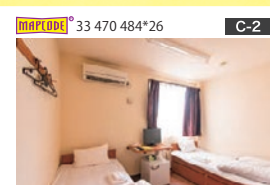


57 Hotel Southern Village

About 10 minutes by car from the Kitanakagusuku IC on the expressway. Conveniently located for easy access to areas in southern to northern Okinawa. The compact rooms, measuring 13 square meters, are fully functional with a prefabricated bathroom, free Wi-Fi, TV, refrigerator, and other amenities.



☎098-935-3030
1304-1 Adaniya, Kitanakagusuku-son
Parking available



*"マップコード" and "MAPCODE" are registered trademarks of DENSO Corporation.